

# CERTIFICATE OF ANALYSIS

**PRODUCT NAME:** Certified Organic CBD Tincture - Orange  
**PRODUCT STRENGTH:** 3572 mg / bottle  
**TINCTURE BATCH:** 22061C  
**BEST BY DATE:** 09/02/2023  
**HEMP EXTRACT LOT:** CO444/223

\*Click on the links to view third-party reports\*

### Physical Attributes

| Test                    | Method   | Specification  | Results |
|-------------------------|----------|--|---------|
| Color                   | Internal | Golden to Amber  | PASS    |
| Odor                    | Internal | Characteristic - Coconut and Hemp, Orange  | PASS    |
| Appearance              | Internal | Golden to Amber oil in brown glass bottle with dropper.  | PASS    |
| Primary Package Eval.   | Internal | Container clean and free of filth. Container caps tight and shrink bands intact                                  | PASS    |
| Secondary Package Eval. | Internal | Labeling Compliance Checked, Cartons sturdy and clean. Sufficient cushion material exists. Box taped and secure. | PASS    |

### Review of Third-Party Analysis

| Panel                                       | Method          | Specification   | Results*  | Pass/Fail |
|---|-----------------|---|-----------|-----------|
| <b>Potency - Total CBD</b>                  | HPLC-UV DAD     | *NLT 3572 mg / bottle   | %( ) %a [ | PASS      |
| <b>Potency - D9-THC</b>                     | HPLC-UV DAD     | LOQ: 10 ppm (.001-0.3%)   | ND        | PASS      |
| <b>Expanded Pesticide Panel</b>             | HPLC-QQQ        | LOQ: Complies with CDPHE 6 CCR 1010-21 Industrial Hemp Extract                                    | Below LOQ | PASS      |
| <b>Microbial</b><br>Escherichia coli (STEC) | PCR             | Complies with CDPHE 6 CCR 1010-21 - LOQ 1 CFU/25 gram   | Absent    | PASS      |
| <b>Microbial</b><br>Salmonella              | PCR             | Complies with CDPHE 6 CCR 1010-21 - LOQ 1 CFU/25 gram   | Absent    | PASS      |
| <b>Microbial</b><br>Yeast and Mold          | Culture Plating | Complies with CDPHE 6 CCR 1010-21 - LOQ 10 <sup>2</sup> CFU/gram                                  | Below LOQ | PASS      |
| <b>Microbial</b><br>Total Coliforms*        | Culture Plating | Complies with CDPHE 6 CCR 1010-21 - LOQ 10 <sup>2</sup> CFU/gram                                  | Below LOQ | PASS      |
| <b>Microbial</b><br>Total Aerobic Count*    | Culture Plating | Complies with CDPHE 6 CCR 1010-21 - LOQ 10 <sup>3</sup> CFU/gram                                  | Below LOQ | PASS      |
| <b>Heavy Metals Panel</b>                   | ICP-MS          | Arsenic (As): ≤1.5 ppm<br>Cadmium (Cd): ≤0.5 ppm<br>Lead (Pb): ≤0.5 ppm<br>Mercury (Hg): ≤1.5 ppm | Below LOQ | PASS      |
| <b>Mycotoxins</b>                           | ICP-MS          | Total Aflatoxins <20 ppb†<br>Aflatoxin B1 < 20 ppb<br>Ochratoxin < 20 ppb                         | Below LOQ | PASS      |
| <b>Residual Solvents</b>                    | GC-HS-MSD       | LOQ: Complies with CDPHE 6 CCR 1010-21 Industrial Hemp Extract                                    | Below LOQ | PASS      |

\* Level of Quantitation, † Parts Per Million  
 ‡ Part Per Billion CFU/g=Colony Forming Units per Gram  
 \*Nothing Less Than  
 10<sup>2</sup>=100 CFU  
 10<sup>3</sup>=1,000 CFU

Quality Certified Keegan Schlittler 03/07/2021  
 Keegan Schlittler Date  
 Quality Assurance Technician

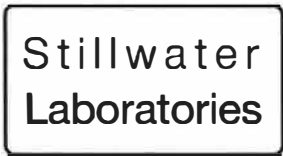


C0222-001

7USC1639 Certificate of Analysis

man. date 2/22/2021

This Product Has Been Tested and Complies with 7USC1639o(1)



certificate ID 1BS31

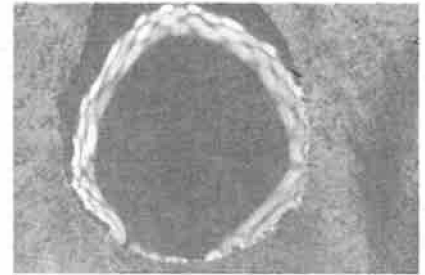
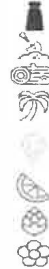
total cannabinoids 1562.0mg per 30 mL
THC total ND CBD total 1445.1m terpenes

order 9903
analysis date 2/22/2021 5:32:07 PM
test tag S1BWO
sample wgt

Inspection MSP-7.5.1.2

DESCRIPTION: Concentrate sample received in a client-labeled bottle, collected at dispensary/grow. 1 and sample tag S1BWO.

- caryophyllene
humulene
terpinolene
ocimene
beta pinene
alpha pinene
limonene
myrcene
linalool



MIP

Table with 4 columns: Potency per 30 mL, MSP-7.5.1.4, LOD, LOQ (95%CI k=2). Rows include tetrahydrocannabinolic acid (THCa), delta-9-tetrahydrocannabinol (delta 9 THC), delta-8-tetrahydrocannabinol (delta 8 THC), tetrahydrocannabivarin (THCv), cannabidiolic acid (CBDa), cannabidiol (CBD), cannabidivarin (CBDv), cannabigerolic acid (CBGa), cannabigerol (CBG), cannabinal (CBN), and cannabichromene (CBC).

Terpenes MSP-7.5.1.6 MSP-7.5.1.6

‡ = decarbed NT = not tested NL = no limit, ND = not detected, LOD = detection limit, LOQ = quantitation limit

Table with 6 columns: Microbial, Metals, Pesticides, Pesticides, Solvents, Pesticides. Each column lists various substances and their corresponding test results (PASS, FAIL) and limits.

SECURITY FEATURE: WATERMARK MUST MATCH CERTIFICATE ID AND ISSUE DATE

Certified by:

Handwritten signature of Justin M Johnston

Stillwater Laboratories Inc.
MT License L00001, 7, 8
6073 US93N Suite 5
Olney MT 59927
406-881-2019

The data in this report is the property of and is administered by Stillwater Labs. The format, layout, and security features of this report are copyrighted by Stillwater Laboratories Inc. © 2020



Justin M Johnston
Deputy Director

Printed
3/2/2021 1:09 PM

https://portal.a2la.org/scopepdf/4961-01.pdf

**OTO1350**

|  |  |                            |
|--|--|----------------------------|
| Batch ID or Lot Number:<br><b>22061A</b> | Test:<br><b>Microbial Contaminants</b> | Reported:<br><b>3/7/22</b> |
|--|--|----------------------------|

|                             |                        |                    |                      |
|-----------------------------|------------------------|--------------------|----------------------|
| Matrix:<br>Finished Product | Test ID:<br>T000196001 | Started:<br>3/2/22 | USDA License:<br>N/A |
|-----------------------------|------------------------|--------------------|----------------------|

|                |  |                                    |                    |
|----------------|--|------------------------------------|--------------------|
| Status:<br>N/A | Methods:<br>TM25 (qPCR)<br>TM24, TM26, TM27(Culture Plating):<br>Microbial | Received:<br>03/02/2022 @ 10:54 AM | Sampler ID:<br>N/A |
|----------------|--|------------------------------------|--------------------|

### MICROBIAL CONTAMINANTS DETERMINATION

| Contaminant                  | Method                 | LOD                      | LLOQ                  | ULOQ                      | Result        | Notes   |
|------------------------------|------------------------|--------------------------|-----------------------|---------------------------|---------------|---|
| <b>Total Aerobic Count*</b>  | TM-26, Culture Plating | 10 <sup>2</sup> CFU/g    | 10 <sup>3</sup> CFU/g | 1.5x10 <sup>5</sup> CFU/g | None Detected | Free from visual mold, mildew, and foreign matter |
| <b>Total Coliforms*</b>      | TM-27, Culture Plating | 10 <sup>1</sup> CFU/g    | 10 <sup>2</sup> CFU/g | 1.5x10 <sup>4</sup> CFU/g | None Detected |   |
| <b>Total Yeast and Mold*</b> | TM-24, Culture Plating | 10 <sup>1</sup> CFU/g    | 10 <sup>2</sup> CFU/g | 1.5x10 <sup>4</sup> CFU/g | None Detected |   |
| <b>STEC</b>                  | TM-25, PCR             | 10 <sup>0</sup> CFU/25 g | NA                    | NA                        | Absent        |   |
| <b>Salmonella</b>            | TM-25, PCR             | 10 <sup>0</sup> CFU/25 g | NA                    | NA                        | Absent        |   |

*Brianne Maillot*  
 Brianne Maillot  
 3/5/2022  
 2:09:00 PM

*Eden Thompson*  
 Eden Thompson-Wright  
 3/7/2022  
 9:12:00 AM

PREPARED BY / DATE

APPROVED BY / DATE

**Definitions**

LOD = Limit of Detection | LLOQ = Lower Limit of Quantitation | ULOQ = Upper Limit of Quantitation  
 CFU/g = Colony Forming Units per Gram | STEC = Shiga Toxin-Producing *E. coli*  
 \* Values recorded in scientific notation, a common microbial practice of expressing numbers that are too large to be conveniently written in decimal form.

- Examples:
- 10<sup>2</sup> = 100 CFU
  - 10<sup>3</sup> = 1,000 CFU
  - 10<sup>4</sup> = 10,000 CFU
  - 10<sup>5</sup> = 100,000 CFU

Testing results are based solely upon the sample submitted to Botanacor Laboratories, LLC, in the condition it was received. Botanacor Laboratories, LLC warrants that all analytical work is conducted professionally in accordance with all applicable standard laboratory practices using validated methods. Data was generated using an unbroken chain of comparison to NIST traceable Reference Standards and Certified Reference Materials. This report may not be reproduced, except in full, without the written approval of Botanacor Laboratories, LLC.



CDPHE Certified



Certificate #4329.02